

# JUPITER Solutions

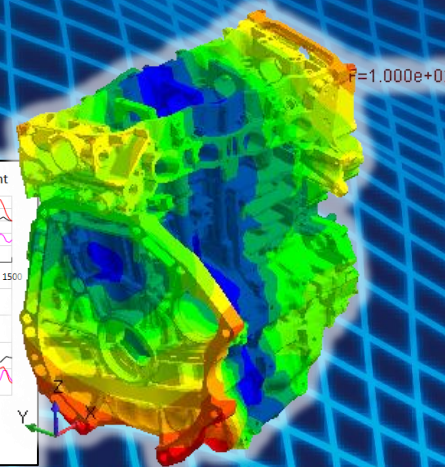
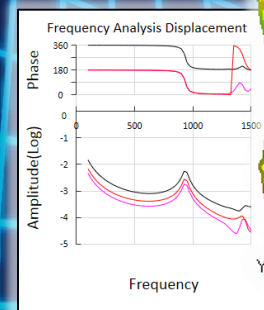
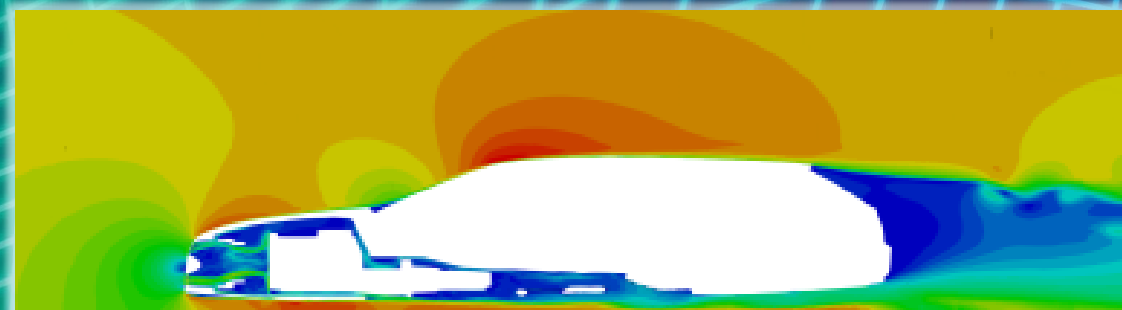
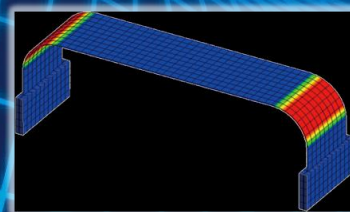
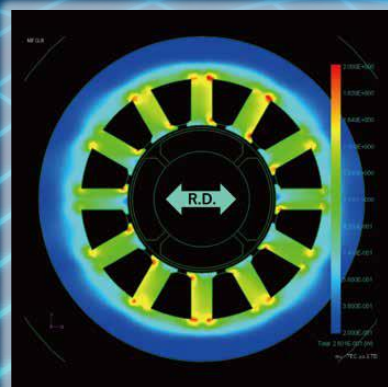
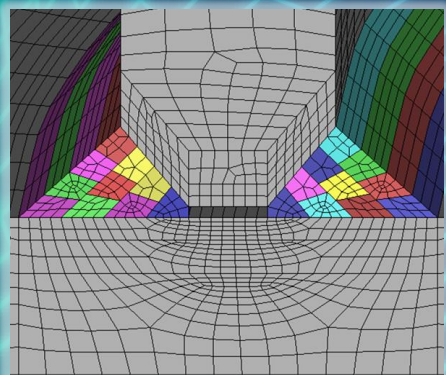
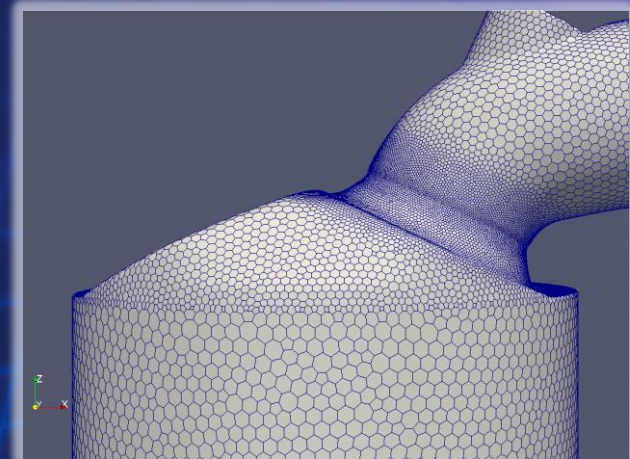
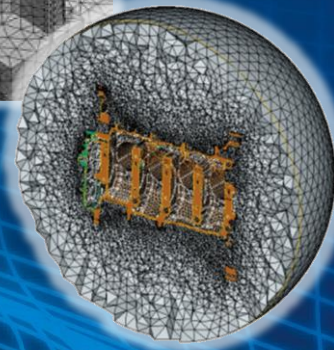
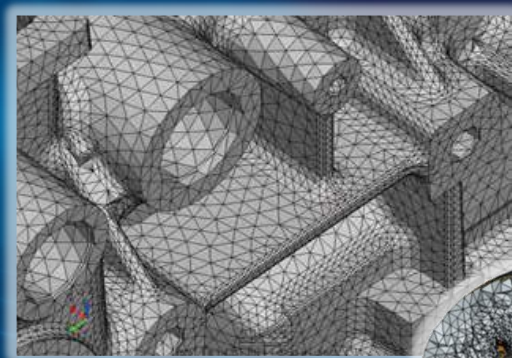
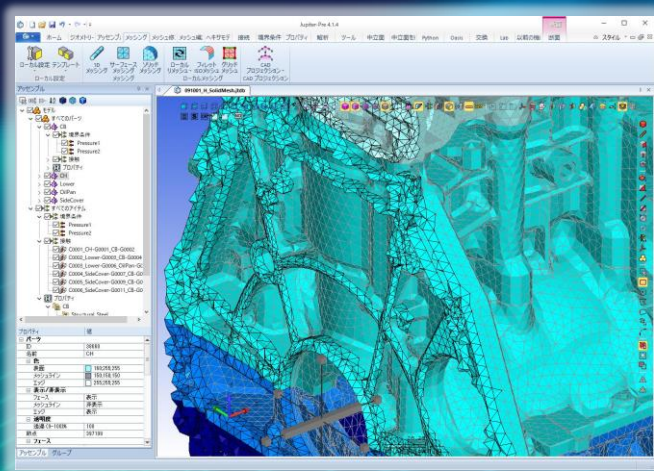
Since the establishments, TechnoStar Co.,Ltd, has been developing domestic CAE software, with a lot of guidance and supports from major automobile companies. Since then, our software products are recognized as an epoch-making that can handle large-scale models, and have achieved capabilities to be applied to many fields in industries, not only automobile, but precision machinery and shipbuilding.

Our core product, “Jupiter” has been expanded its applicable fields from structural analysis to fluid, electro-magnetic and mechanical, and also, its (programmable) APIs are open to all customers.

Now, we are challenging up-to-date technologies such as AI, Cloud, Digital-Twin etc..., and we are keen to develop software that can respond to advances of technology together with customers.

**Jupiter is general purpose CAE Pre/Post platform.**  
**There are many special products for any fields.**

- Pre for OpenFOAM
- Pre/Post for Iron loss analysis
- Pre/Post for Acoustic Analysis
- Exhaust Mesh Modeling
- Hex Multi-Pass Weld Modeling
- Full Auto Solid Meshing
- CAE Part Exchange System
- Initial Stress Calculation for Flexi
- PSJ (Python Script in Jupiter) and more



## SunShine

SunShine is large-scale parallel solver with Nastran format.

- Sol101, Sol105, Sol106
- Sol103, Sol111
- Sol153, Sol159



**TechnoStar Co., Ltd.**  
 6th Floor, Aoyama Yasuda Bldg.,  
 7-1-1 Akasaka Minato-ku, Tokyo, 107-0052 JAPAN  
 TEL: +81-3-6434-9577

In more detail, we also introduce case studies.

<https://www.e-technostar.com/>